

Qerndu

Photo London 2026
Booth B04



Qerndu

Ragnar Axelsson
Ari Magg
Pétur Thomsen

Laugavegur 3
101 Reykjavik
Iceland

www.qerndu.com
ainar@qerndu.com
+354 896 1817

Ragnar Axelsson

Ragnar Axelsson (b. 1958, Iceland) has spent over four decades photographing life in the Arctic and the North Atlantic.

His black-and-white photographs document communities and landscapes shaped by extreme conditions and long-term environmental change. The work is based on sustained

engagement, often returning to the same places and people over many years.

Axelsson's photographs have been exhibited internationally and are held in major collections. His publications include *Last Days of the Arctic*, *Behind Mountains*, and *Arctic Heroes*.



Ragnar Axelsson
Sled Dog, Greenland, 2007

Size: 150 × 115 cm

Framed size: 158 × 123 cm

Archival pigment print

Series: Arctic Heroes, 2020

Edition 10 + 2AP

£11,000

Frame £800



Ragnar Axelsson
Polar Bear Tracks on the Sea Ice,
Greenland, 2017

Size: 107 × 162 cm
Framed size: 113 × 168 cm

Archival pigment print
Series: Arctic Heroes, 2020
Edition 10 + 2AP

£7,000

Frame £700



Ragnar Axelsson
Polar Bear and Sled Dogs on Iceberg,
Scoresbysund, Greenland, 2026

Size: 72 × 105 cm
Framed size: 76 × 109 cm

Archival pigment print
Edition 10 + 2AP

£4,000

Frame £500



Ragnar Axelsson

Jökulglil, 2007

Size: 115 × 90 cm

Framed size: 124 × 98 cm

Archival pigment print

Series: Behind Mountains, 2014

Edition 10 + 2AP

£7000

Frame £500



Ragnar Axelsson
Storm, Thule, Qaanaq, Greenland,
2019

Size: 72 × 47 cm
Framed size: 112 × 94 cm

Archival pigment print
Series: *Where the World is Melting*, 2021
Edition 10 + 2AP

£4,500

Frame £500



Ragnar Axelsson
Dómsdalur, Ísland, 2005

Size: 170 x 90 cm

Framed size: 174 x 94 cm

Archival pigment print

Series: Behind Mountains, 2014

Edition 10 + 2AP

£5,500

Frame £500



Ragnar Axelsson
Iceberg, Scoresbysund, Greenland,
2024

Size: 80 × 120 cm
Framed size: 86 × 126 cm

Archival pigment print
Series: *Where the World is Melting*, 2021
Edition 10 + 2AP

£4,500

Frame £500



Ragnar Axelsson
Köttljökull, Iceland, 2022

Size: 60 × 90 cm

Framed size: 66 × 96 cm

Archival pigment print
Edition 10 + 2AP

£3,500

Frame £300



Ragnar Axelsson
Iceberg, Scoresbysund, Greenland,
2024

Size: 36 × 24 cm
Framed size: 42 × 32 cm

Archival pigment print
Series: *Where the World is Melting*, 2021
Edition 10 + 2AP

£2,000

Frame £140



Ragnar Axelsson
Sled dogs on the Sea Ice, Greenland,
2024

Size: 36 × 24 cm
Framed size: 42 × 32 cm

Archival pigment print
Series: Where the World is Melting, 2021
Edition 10 + 2AP

£2,000

Frame £140



Ragnar Axelsson
Storm in Ittoqqortoormiit, Greenland,
2024

Size: 36 × 24 cm
Framed size: 42 × 32 cm

Archival pigment print
Series: *Where the World is Melting*, 2021
Edition 10 + 2AP

£2,000

Frame £140



Ragnar Axelsson
Hunter in Scoresbysund, Greenland,
1995

Size: 36 × 24 cm
Framed size: 42 × 32 cm

Archival pigment print
Edition 10 + 2AP

£2,000

Frame £140

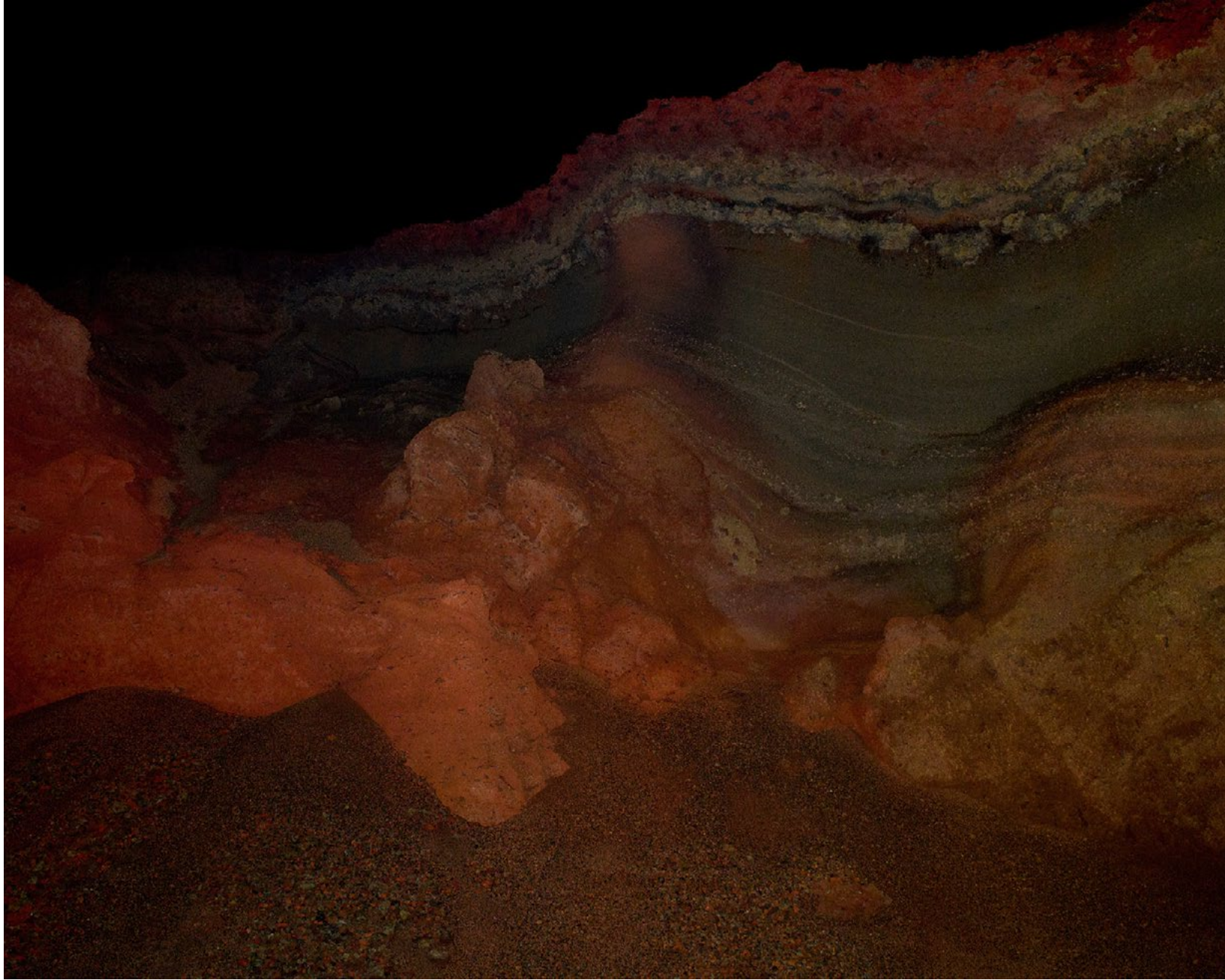
Pétur Thomsen

Pétur Thomsen (b. 1973, Reykjavík) is an Icelandic photographer based in the south of Iceland. His work focuses on the transformation of landscape and the relationship between human activity and nature.

In series such as *Imported Landscape*, *Umhverfing*, and *Landnám*, he examines environments shaped by intervention, use, and gradual change. His approach is grounded in

fieldwork, often working directly within the landscape, using light as a structural element, particularly in recent works made during the winter nights.

His work has been widely exhibited internationally, including at Les Rencontres d'Arles, Musée de l'Elysée, and major institutions in Iceland. In 2025, he received the Icelandic Art Prize as Artist of the Year for *Landnám / Settlement*.



Pétur Thomsen

Landnám 1812, 2022

Size: 108 x 135 cm

Archival pigment print

Edition 3 + 1AP

£7,000

Frame £700



Pétur Thomsen
Landnám_3287, 2023

Size: 64 × 80 cm
Archival pigment print
Edition 3 + 1AP

£3,000

Frame £300



Pétur Thomsen
Landnám_5921, 2023

Size: 64 × 80 cm
Archival pigment print
Edition 3 + 1AP

£3,000

Frame £300

Ari Magg

Ari Magg is an Icelandic photographer whose work moves between landscape and abstraction, shaped by the light and conditions of the North Atlantic.

His photographs reduce place to colour, surface, and structure, often working at the edge of representation.



Ari Magg

Rothko, 2014

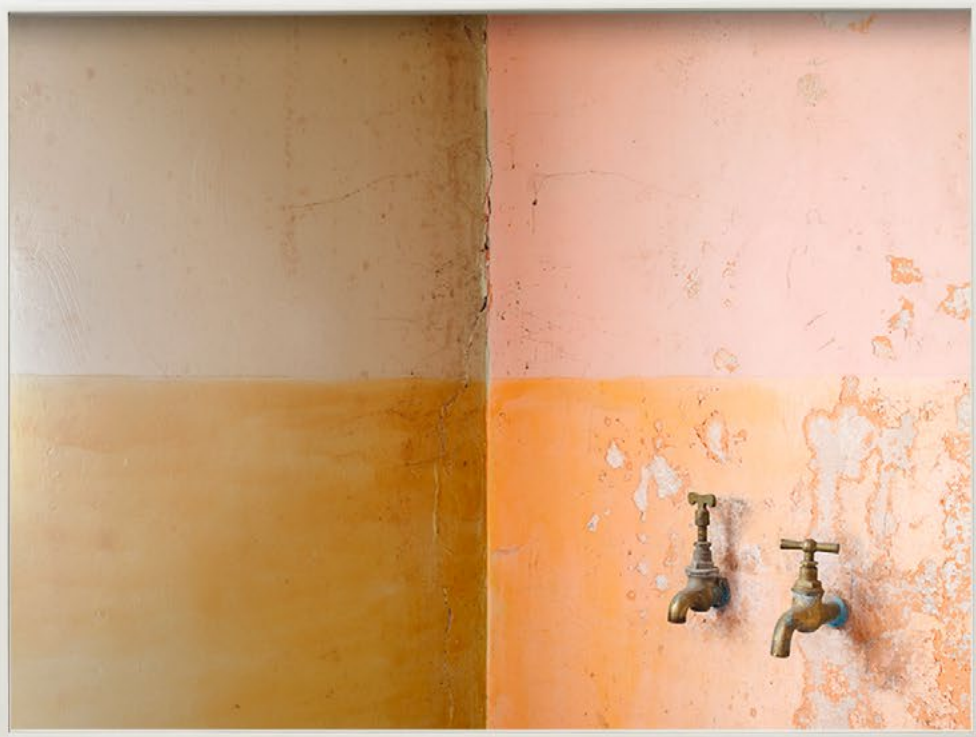
Size: 80 × 106 cm

Archival pigment print

Edition 3 + 2AP

£5,000

Frame £400





Ari Magg
Hrafninnusker No. 1 and No. 2, 2018

Each print size: 67 × 100 cm
Total size: 145 × 100 cm
Archival pigment print
Edition 5 + 2AP

£5,000

Frame £600



Ari Magg

Ísafjarðardjúp, 2017

Size: 213 × 152 cm

Archival pigment print

Edition 5 + 2AP

£7,500



Ari Magg
Fog, 2018

Size: 67 × 100 cm
Archival pigment print
Edition 5 + 2AP

£4,000

Frame £300

Photo London 2026
Booth B04

QERNDU

Ragnar Axelsson
Ari Magg
Pétur Thomsen

Laugavegur 3
101 Reykjavik
Iceland

www.qerndu.com
einar@qerndu.com
+354 896 1817

All prices exclude framing and shipping.